

Links & Receptacles



RC00140 6 14 19 19 22 22
 RC00150 6 8 14 19 19 22 22 26

RC00141 6 14 RC00151 6 14
 RC00142 19 19 RC00152 8 22 22
 RC00143 22 22 RC00153 19 19

RC00241 19 19
 RC00251 19 19
 RC00252 8
 RC00253 22 22 26 26

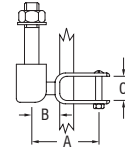
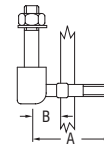
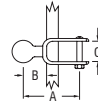
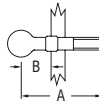
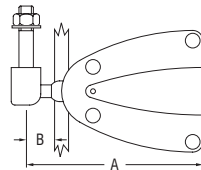
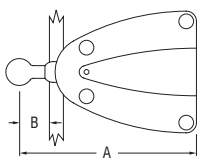


RC00210 19 19
 RC00211 8
 RC00212 22 22 26 26
 RC00213 26 26 30 30
 RC00214 42

RC002R1 8
 RC002R2 19 19

RC00110 6 14
 RC00111 8 22 22
 RC00112 19 19

RC001R1 6 14
 RC001R2 8
 RC001R3 19 19



PRODUCT No.	DESCRIPTION	A	B	C	WEIGHT	A	B	C	WEIGHT
		mm	mm	mm	g	in.	in.	in.	oz
RC00110	Batten receptacle link with M10 thread	48	19	-	55	1 29/32	3/4	-	1.9
RC00111	Batten receptacle link with M10 thread	45	19	-	75	1 25/32	3/4	-	2.6
RC00112	Batten receptacle link with M10 thread	48	19	-	71	1 29/32	3/4	-	2.5
RC00140	Batten receptacle, Nylon, suits 40mm (1 9/16") flat & 14mm (9/16") round battens	-	-	-	61	-	-	-	2.2
RC00141	Batten receptacle link with RC00140 receptacle	92	15	-	105	3 5/8	19/32	-	3.7
RC00142	Batten receptacle link with RC00140 receptacle	94	17	-	122	3 23/32	21/32	-	4.3
RC00143	Batten receptacle link with RC00140 receptacle	96	19	-	116	3 25/32	3/4	-	4.1
RC00150	Batten receptacle, Nylon, suits 50mm (1 31/32") flat & 18mm (23/32") round battens	-	-	-	115	-	-	-	4.1
RC00151	Batten receptacle link with RC00150 receptacle	110	15	-	170	4 11/32	19/32	-	6.0
RC00152	Batten receptacle link with RC00150 receptacle	116	19	-	190	4 9/16	3/4	-	6.7
RC00153	Batten receptacle link with RC00150 receptacle	114	17	-	188	4 1/2	21/32	-	6.6
RC001R1	Batten receptacle link to suit Rutgerson receptacle	34	15	15	50	1 11/32	19/32	19/32	1.8
RC001R2	Batten receptacle link to suit Rutgerson receptacle	37	19	15	69	1 15/32	3/4	19/32	2.4
RC001R3	Batten receptacle link to suit Rutgerson receptacle	34	15	15	66	1 11/32	19/32	19/32	2.3
RC00210	Quick release batten receptacle link with M10 thread. Ball 11.5mm (7/16") diameter	48	19	-	31	1 29/32	3/4	-	1.1
RC00211	Quick release batten receptacle link with M10 thread. Ball 13.0mm (1/2") diameter	45	19	-	36	1 25/32	3/4	-	1.3
RC00212	Quick release batten receptacle link with M10 thread. Ball 15.4mm (5/8") diameter	62	19	-	49	2 7/16	3/4	-	1.7
RC00213	Quick release batten receptacle link with M12 thread. Ball 15.4mm (5/8") diameter	62	19	-	59	2 7/16	3/4	-	2.1
RC00214	Quick release batten receptacle link with M14 thread. Ball 19.8mm (25/32") diameter	100	26	-	118	3 15/16	1 1/32	-	4.2
RC00241	Quick release batten receptacle link with RC00140 receptacle. Ball 11.5mm (7/16") diameter	94	17	-	82	3 23/32	21/32	-	2.9
RC00251	Quick release batten receptacle link with RC00150 receptacle. Ball 11.5mm (7/16") diameter	114	17	-	147	4 1/2	21/32	-	5.2
RC00252	Quick release batten receptacle link with RC00150 receptacle. Ball 13.0mm (1/2") diameter	116	19	-	152	4 9/16	3/4	-	5.4
RC00253	Quick release batten receptacle link with RC00150 receptacle. Ball 15.4mm (5/8") diameter	116	19	-	165	4 9/16	3/4	-	5.8
RC002R1	Quick release batten receptacle link to suit Rutgerson receptacle. Ball 13.0mm (1/2") diameter	45	19	15	30	1 25/32	3/4	19/32	1.1
RC002R2	Quick release batten receptacle link to suit Rutgerson receptacle. Ball 11.5mm (7/16") diameter	34	15	15	25	1 11/32	19/32	19/32	0.9