

Series 42 BB



Brossard 60' Trimaran
Photo: www.team-ocean.com



RC14263



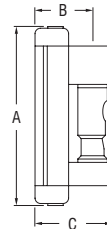
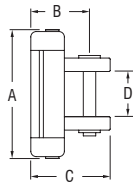
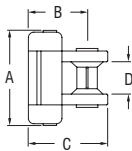
RC00023



RC14272



RC14269



- Monohulls to 29m (95ft) or sail area 168m² (1808ft²).
- Multihulls to 22m (72ft) or sail area 125m² (1345ft²).

- Refer to the Ronstan website for assistance in specifying system requirements and schematic diagrams.
- Suits standard batten receptacles and links, see pages 152-153.

PRODUCT No.	DESCRIPTION	A	B	C	D	WEIGHT	A	B	C	D	WEIGHT
		mm	mm	mm	mm	g	in.	in.	in.	in.	oz
RC00023	Bush, suits 19mm (3/4") webbing	-	-	-	-	3	-	-	-	-	0.1
RC14263	Intermediate car	85	56	71	25	420	3 11/32	2 7/32	2 13/16	1	14.8
RC14269	Quick release batten car	165	56	71	-	1035	6 1/2	2 7/32	2 13/16	-	36.5
RC14272	Reef car	170	56	71	52	1135	6 11/32	2 7/32	2 13/16	2 1/16	40.0