

X-Yachts X-35
 Photo: Per Heegaard / www.heegaard-fotografi.dk



RC26166
 RC26266
 RC26366
 RC26466
 RC26566



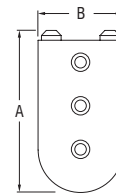
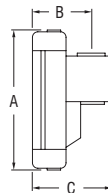
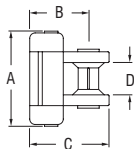
RC26163
 RC26263
 RC26363
 RC26463
 RC26563



RC00021



RC26181



- Monohulls to 12m (40ft) or sail area 38m² (409ft²).
- Multihulls to 9m (30ft) or sail area 30m² (323ft²).

- Refer to the Ronstan website for assistance in specifying system requirements and schematic diagrams.
- Suits standard batten receptacles and links, see pages 152-153.

PRODUCT No.	DESCRIPTION	A	B	C	D	E	WEIGHT	A	B	C	D	E	WEIGHT
		mm	mm	mm	mm	mm	g	in.	in.	in.	in.	in.	oz
RC00021	Bush, suits 13mm (1/2") webbing	-	-	-	-	-	1	-	-	-	-	-	0.1
RC26163	Intermediate car	55	23	31	18	41	50	2 5/32	29/32	1 7/32	23/32	1 5/8	1.8
RC26166	Batten car	68	23	31	-	41	65	2 11/16	29/32	1 7/32	-	1 5/8	2.3
RC26181	End stop, plastic	68	33	-	-	-	11	2 11/16	1 5/16	-	-	-	0.4
RC26263	Intermediate car	55	23	31	18	41	50	2 5/32	29/32	1 7/32	23/32	1 5/8	1.8
RC26266	Batten car	68	23	31	-	41	65	2 11/16	29/32	1 7/32	-	1 5/8	2.3
RC26363	Intermediate car	55	23	31	18	41	50	2 5/32	29/32	1 7/32	23/32	1 5/8	1.8
RC26366	Batten car	68	23	31	-	41	65	2 11/16	29/32	1 7/32	-	1 5/8	2.3
RC26463	Intermediate car	55	23	31	18	41	50	2 5/32	29/32	1 7/32	23/32	1 5/8	1.8
RC26466	Batten car	68	23	31	-	41	65	2 11/16	29/32	1 7/32	-	1 5/8	2.3
RC26563	Intermediate car	55	23	31	18	41	50	2 5/32	29/32	1 7/32	23/32	1 5/8	1.8
RC26566	Batten car	68	23	31	-	41	65	2 11/16	29/32	1 7/32	-	1 5/8	2.3